



PRAIRIE DUNE SERIES  
SINGLE-SECTION

## PRAIRIE DUNE SERIES

### SINGLE-SECTION

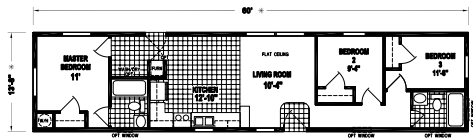
Inspired touches make the Prairie Dune Series by Skyline Homes anything but ordinary. Skyline offers three and four bedroom models, each with two baths. Whether you opt for the base floor plan or the optional den and laundry room, you're sure to find a comfortable place to call home.

Manufactured in Arkansas City, Kansas and backed by over 65 years of manufacturing experience, a 12-month warranty and stellar customer service — take a look for yourself to see why the Prairie Dune Series is the right decision for you and your family.



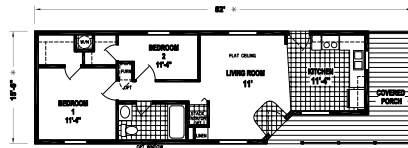
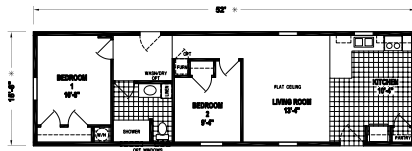
**PRAIRIE DUNE  
8307F**

3 BED-2 BATH  
820 SQ.FT.



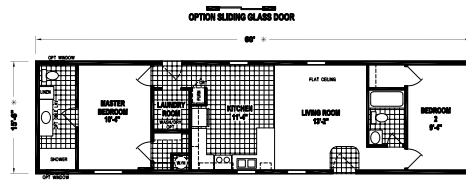
**PRAIRIE DUNE  
8720E**

2 BED-1 BATH  
806 SQ.FT.



**PRAIRIE DUNE  
8769E**

2 BED-1 BATH  
806 SQ.FT.

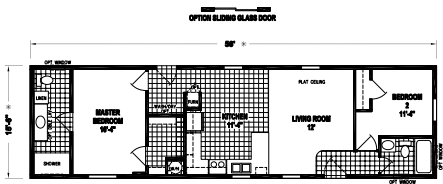


**PRAIRIE DUNE  
8732E**

2 BED-2 BATH  
930 SQ.FT.

**PRAIRIE DUNE  
8719E**

2 BED-2 BATH  
868 SQ.FT.

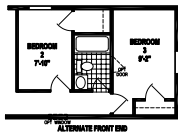
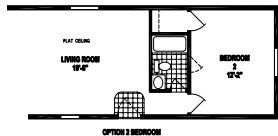
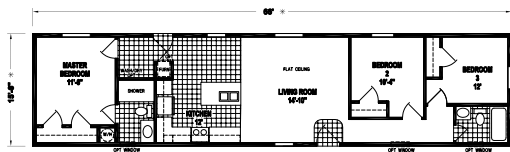


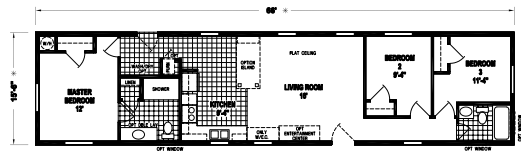
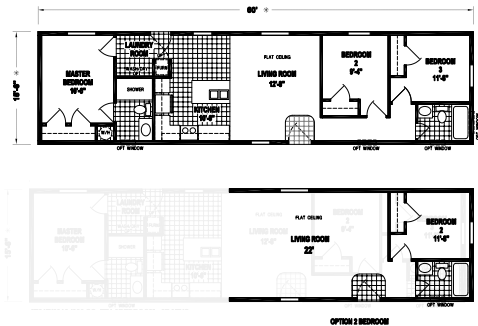
PRAIRIE DUNE  
8725 E

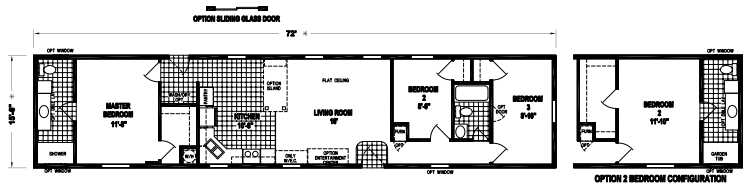
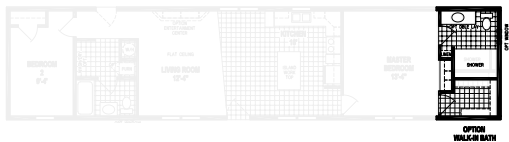
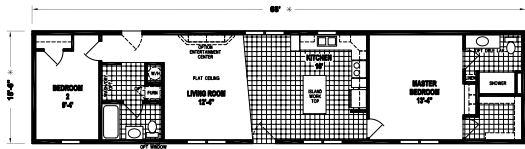
3 BED-2 BATH  
1023 SQ.FT.



Shown with Optional Exterior







PRAIRIE DUNE  
8726E

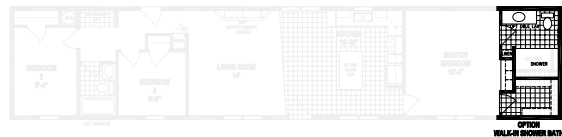
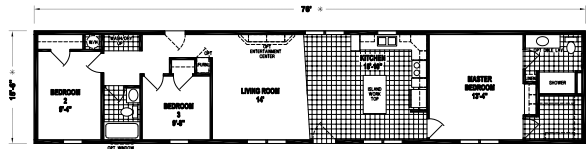
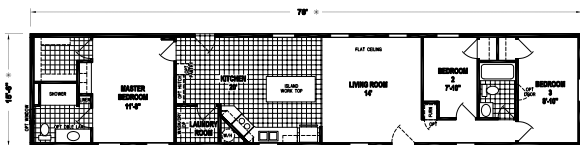
3 BED-2 BATH  
1178 SQ.FT.



Shown with Optional Exterior

PRAIRIE DUNE  
8788E

3 BED-2 BATH  
1178 SQ.FT.



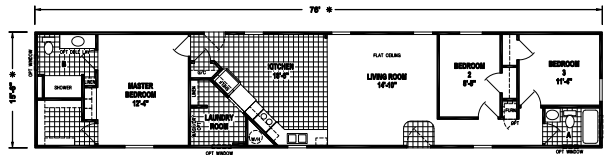


**PRAIRIE DUNE**  
8785E

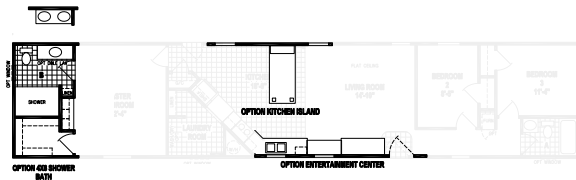
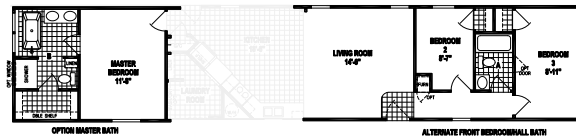
3 BED-2 BATH  
1178 SQ. FT.

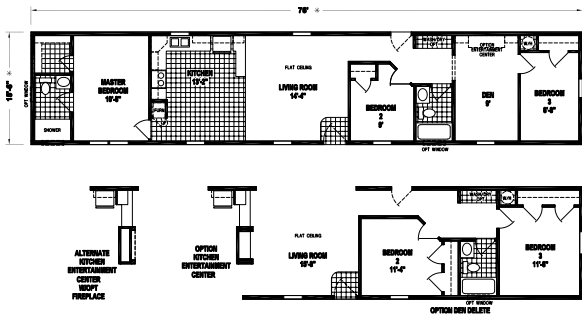


Shown with Optional Exterior



OPTION SLIDING GLASS DOOR





#### CONSTRUCTION

- 8' Sidewall Height
- Flat Ceilings Throughout
- 2x4 Exterior Walls
- 2x3 Interior Walls
- 3/12 Roof Pitch
- 30# Roof Load
- 2x6 Joists on 14' Wide
- 2x8 Joists on 16' Wide
- Detachable Hitch
- Thermal Zone II
- Insulation R 19-11-11

#### EXTERIOR

- Vinyl Siding with House Wrap
- OSB Sheathing on Sides and Ends
- 25-Year Roof, 3-Tab Shingles
- 36" 4-Light Fiberglass Front Door
- 32" 6-Panel Fiberglass Rear Door
- Single-Hung Low-E Windows

#### HEATING/UTILITY

- Electric Furnace
- Inline Metal Heat Ducts
- 40-Gallon Electric Water Heater
- Plumb for Washer
- Wire for Dryer
- Wire Shelving above Washer and Dryer

#### PLUMBING/ELECTRICAL

- 200 AMP Service
- LED Throughout (Except Pendants and Ceiling Fans)
- Exterior GFCI Receptacle
- Whole House Water Shut-Off
- Water Shut-Offs All Fixtures
- DWV and Water Supply Plumbed into Drop (s)

#### INTERIOR

- Linoleum Entry
- Shaw® Live Wire Carpet
- 1/2" Rebound Carpet Pad
- Tack Strip and Carpet Bar
- Mini Blinds
- Vinyl on Gypsum
- 1 1/2" Crown Molding (19X)
- 1 1/2" Base (6M)
- 1 1/2" Casing (6M)
- Lip Molding with Wrapped Iuan Jamb on Exterior Doors and Windows (10H)

#### KITCHEN

- CS90 Cabinet Construction
- Flat Panel Cabinet Doors
- Hardwood Cabinet Styles
- Roller Drawer Guides
- Single 3" Stacked Style Cabinet Molding
- Shelf in Base Cabinet
- Self-Edge HPL Countertop
- 4" Laminate Backsplash
- 8" Double Bowl Sink - Stainless Steel
- Single-Lever Kitchen Faucet

#### APPLIANCES

- 18 Cu. Ft. Refrigerator
- 30" Black Electric Range
- Lighted Range Hood

#### BATHROOM(S)

- Flat Panel Cabinet Doors
- Hardwood Cabinet Styles
- 1-Piece Fiberglass Tub/Showers
- Self-Edge HPL Countertop
- China Lavatory Bowls
- Dual Handle Lavatory Faucets
- Elongated China Commodes
- Power Vent Fan with Light

Due to continuous product development and improvement, prices, specifications, and materials are subject to change without notice or obligation. Square footage and other dimensions are approximate. Exterior images may be artist renderings and are not intended to be an accurate representation of the home. Renderings, photos and floor plans may be shown with optional features or third-party additions.

**SKYLINE**®

Arkansas City, KS